



IN LEAGUE REPORTER

THE LEAGUE OF WOMEN VOTERS OF METRO ST LOUIS

8706 Manchester Road, Suite 104,
St Louis, MO 63144 314.961.6869 league@lwwstl.org
www.facebook.com/lwwstl www.lwwstl.org

AUGUST 2015

THEATRE PARTY SET

The Annual Theatre Party will be on October 24th this year, at the Stray Dog Theatre located in the Tower Grove Abbey in St. Louis.

“SDT aims to create productions that challenge, educate, entertain, and inspire audiences and artists alike. Reflecting the human experience by bringing social awareness to universal social issues is paramount.” Watch for more information in the September ILR, and visit the Stray Dog website at: www.straydogtheatre.org for more information.

The Theatre Party is one of the main fundraising activities of the League and all members are encouraged to support this entertaining event. Volunteer information on page 5.



FEATURE ARTICLES

Modrell Honored by MWN Kickoff	1
Presidents' Message	2
Money & Politics Intro	3-4
Volunteer Opportunities	4
Environmental Quality	5
Equality Day Brunch	6
Fall Kickoff	7
Health Care Update	8
2015-2016 Calendar	9-10
Celebrate the Vote	10
Member News	11
Executive Director	11
Calendar for August	12

EQUALITY DAY BRUNCH HONORS LEAGUE MEMBER

On Saturday, August 22nd, the Missouri Women's Network will hold the 28th Annual Equality Day Brunch, celebrating the 95th Anniversary of Women Winning the Right To Vote.



Dianne Modrell

Three Outstanding Missouri Women will be honored at the Brunch, including **League Board Member Dianne Modrell**. Dianne is also serving as Health Care Committee Chair for the LWVMetroSTL, and has worked persistently to convince lawmakers in Jefferson City to expand Medicaid coverage in Missouri. She also serves as a Board member of Health Advocacy Alliance and Missouri State

Women's Political Caucus.

The Speaker at the Brunch this year will be Caroline Fredrickson, JD, author of *Under the Bus: How Working Women are Being Run Over*. Presently Ms Fredrickson is president of the American Constitution Society. Before joining ACS, Caroline served as the director of the ACLU's Washington legislative office and as general counsel and legal director of NARAL Pro-Choice America. During the Clinton administration, she served as special assistant to the president for legislative affairs.



Caroline Fredrickson

Other women to be honored are Judith Parker and Laura X. Join fellow Leaguers at the Brunch to honor these women. It is being held at the Crowne Plaza Hotel, 7750 Carondelet, in Clayton. Parking is available at no cost at the adjacent parking garage. Registration begins at 9:30am with the program beginning at 10:00am. Deadline for ticket purchase is August 15th. See page 6.

KICKOFF FOCUSES ON FERGUSON FOLLOW-UP

As the League begins the 2015-2016 year of committee work, issue studies, elections, voter education and registration and more, we want to move forward by taking a look at the efforts of the last year in our community concerning the events in Ferguson in 2014. The Governor's special study committee, the Missouri State Circuit Court, legal organizations, St. Louis County and the City of St. Louis and the City of Ferguson have all committed their resources to improving conditions for the underserved in the St. Louis region. At our Kickoff, a panel representing groups involved in this issue will be discussing the future of the area as they see it. See page 7 for more information.

**W
O
R
D
S
-
M
E
T
R
O
-
S
T
L
O
U
I
S
E**

"..Summer time and the livin' is easy.."

Well maybe not in St Louis with its summer heat. It is vacation time, and we hope everyone enjoys a good one. Linda was on vacation a couple of weeks ago, and Kathleen is enjoying her vacation now. The League does not take vacation; full steam ahead.

In early July the board had a retreat to discuss the successes and lessons learned of the past year and plan for 2016. After a good discussion, the board agreed on three organizational goals: Increase social media, member engagement and new member knowledge and involvement. The three external goals and functions are: Lunch and Learn programs, Celebration of the Suffragist Walkless Talkless Parade of 1916, and prepare for the 2016 elections. As always we agree it is important for the League to be focused but flexible.

The League is excited to report that one of us is being recognized by the Missouri Women's Network at the annual Equality Day Luncheon for her work on all issues on health care. We have known of her expertize and knowledge for years. Any time we ask a question she provides us with a briefing it is always informative and keeps us up to date on an issue which always seems to be changing. Thank you Dianne. See page 6 for registration information for the Luncheon.

The first organization meetings were held to plan for the program to educate new citizens about the functioning and purpose of local government: Your Vote Your Voice in Local Government, Empowering New Citizens to Participate in Local Government. You will be hearing more about this and have the opportunity to be a part of this program.

Two members of the LWVUS board will be visiting us August 21 and 22 at the League office. We invite you to stop by the office and have the opportunity to visit with them.

Our new Politics and Money study, our October Theatre Party and the elections we supervise for the St Louis Housing Authority will all need volunteers. Read about them in the following pages, step up, and get involved!

We look forward to seeing everyone at our Kickoff Meeting and stay cool!

Co-presidents Kathleen Farrell

Linda C. McDaniel

2015-2016 LWVMetroSTL		<u>Directors:</u>
BOARD of DIRECTORS		Mickey Croyle
Co-Presidents:		Eve Golden
	Linda C McDaniel	Barbara Harris
	Kathleen Farrell	Nancy Hutchins
1st V.P.:	Catherine Stenger	Dianne Modrell
2nd V.P.:	Nancy Miller	Gwen Moore
Secretary:	Jane Nettesheim	Sydell Shayer
Treasurer:	Becky Clausen	Louise Wilkerson
		ILR Editor Nancy Miller

BACKGROUND ABOUT MONEY IN ELECTIONS¹

We will be using the ILR to summarize some of this vast information being posted on the LWVUS website for the Money in Election Study. Please visit the LWVUS website for more in-depth information (follow the links below). Interested in joining our Committee that will work to educate ourselves and our members before the Consensus in January 2016 – call the League Office (314-961-6869)! This first article is a summary of the information presented in *The New Soft Money Outside Spending in Congressional Election*¹.

Regardless of ones view on *Citizen United* there is no doubt that independent spending has increased dramatically. There is increased controversy over the money spent by individuals, corporations, labor unions, Super PACs and other outside groups that influence the federal elections.

Who Spends the Money ¹			
The Old Guard		The New Players	
Candidates	PACs (Political Action Committee is a political committee organized for the purpose of raising and spending money to elect and defeat candidates)	Non-Profits	SuperPACs (A political action committee that makes unlimited expenditures that are not coordinated with any candidate or party.)
Amount Limits		No limits on source or amount of contributions	
Source Limitations: no union or corporate treasury funds		Cannot give money to candidates or PACs	
Can give money to candidates and PACS		Can make independent expenditures	
All contributions and expenditures must be reported to the FEC		SuperPACs must report contributions and expenditures to the FEC Non-Profits report some	

Spending by outside groups not affiliated with candidates or parties has increased dramatically. Most outside spending in congressional races funded express advocacy in opposition to a candidate”

There are four categories of groups that engage in outside spending:

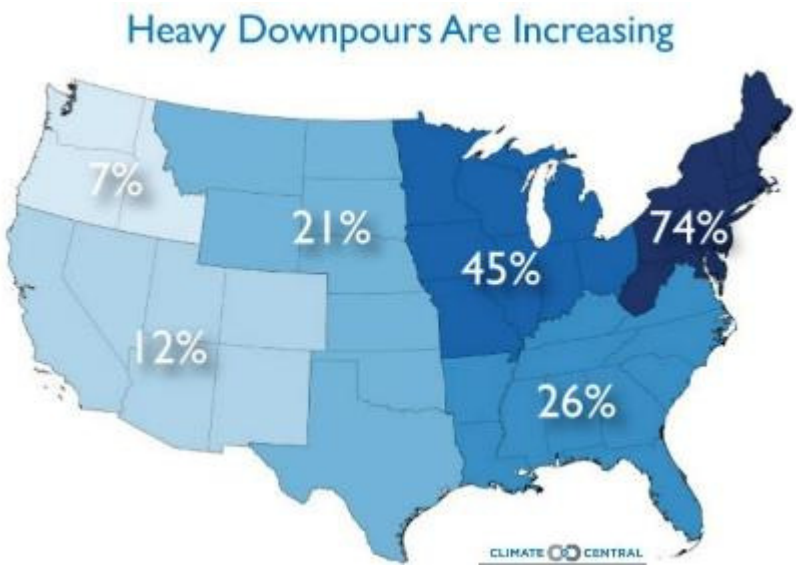
1. **Shadow Parties** that support either Democratic or Republican candidates without being associated with a particular issue.
2. **Old Hands** are groups of long-established organizations with known interests and policy agendas that have multiple organizational forms and typically engage in both electoral and legislative advocacy.

MONEY & POLITICS

CLIMATE CHANGE AND ST LOUIS

Can you make the connection between the world's growing population, human health, and our environment? Climate change as a response to global warming is just one impact of the world's growing population. Is the St Louis Area ready for the impacts of climate change? Did you read the recent articles in the Post Dispatch? (go to <http://www.cleanairmissouri.org/news/>)

As floodwaters surge along major rivers in the midwestern United States, a new study from Washington University in St. Louis suggests federal agencies are *underestimating* historic 100-year flood levels on these rivers by as much as five feet, a miscalculation that has serious implications for future flood risks, flood insurance, and business development in an expanding floodplain. Global warming and the resulting increase in extreme weather cycles has only added to the flooding risk in recent years. Floods at Hannibal have exceeded the "10-year" flood levels in 2009, 2010 and 2011. During 2013 and 2014, the Hannibal area experienced officially designated "50-year" floods.



EQ committee will be posting in the ILR numerous action alerts from the Clean Energy Coalition. Please respond to the action alerts. The St Louis Area needs to respond to the impacts of climate change! The MCEC goals include: Making energy conservation and efficiency a priority, Shifting from jobs dependent on fossil fuels, and securing a clean energy economy.

Mickey Croyle, EQ Committee Chairman

The Environmental Quality Committee will be meeting on August 11, 2015 in the League office at 7:00 pm. Mickey will provide the treats.

Please join us as we study and discuss this topic vital to our community.

**Calling ALL Theatre Party Enthusiasts!!
Event Chair Becky Clausen is accepting
volunteers for the Steering Committee of the
upcoming presentation: "Dog Fight"
Contact Becky at treasurer@lwvstl.org or
314.961.6869**



Missouri Women's Network Presents

28th Annual

EQUALITY DAY BRUNCH

95th Anniversary of Women Winning the Vote

Caroline Fredrickson, JD

author of

Under the Bus: How Working Women are Being Run Over

- noted author and president of the American Constitution Society
- former legal director for NARAL
- special assistant for legislative affairs in the Clinton administration

A book signing will be held at the conclusion of the event

Presentations include Legislative Updates, Legacy Tributes and Equality Day Awards to the following outstanding women:

Dianne Modrell

Judith Parker

Laura X

Saturday, August 22, 2015

10:00 am - 2:00 pm

(registration begins at 9:30 am)

Crowne Plaza Hotel - 7750 Carondelet - Clayton, MO

Free hotel parking on Orange Level

Registration Form

Name

Address

City/State/Zip

E-mail

Phone

*Scholarships are available, contact Shirley Breeze

Sign up for

Brunch and Program **\$ 37.00***

Brunch and Program - Student Rate **15.00**

MWN Educational Fund Donation _____

MWN Scholarship Fund Donation _____

MWN Membership Dues (1 year) _____

(Organization \$30 / Individual \$20)

Total included \$ _____

Make checks payable to: Missouri Women's Network

Mail to: Julie Triplett, 401 Oakmont Circle, Ballwin, MO 63011

Call Shirley Breeze (314-831-5359) or Pat Shores (636-938-3958) for

additional information or late reservations. Limited number of late

reservations. **DEADLINE - August 15, 2015**

FALL KICK*OFF

League of Women Voters of Metro STL

Invites You to Join Us

Wednesday, September 16, 2015

5:30-8:00pm

Orlando Gardens Banquet Center
2050 Dorsett Village Plaza
Maryland Heights 63043

Panel Discussion:

POST FERGUSON: WHAT COMES NEXT?

*Panel: St. Louis County Committeewoman
Arch City Defenders Lawyer
St Louis Alderperson*

Social Hour		5:30
Dinner	\$25.00	6:00
Update from the Presidents		6:30
Panel Discussion		6:45

R.S.V.P. DUE Sept. 8th

Attending _____

Contact Information _____

Payment Included # _____ x \$ 25.00 = _____



For more information, please call the League office at 314-961-6869, or
send us an email at League@lwwstl.org , subject: KO Tickets,
or purchase tickets online at: www.lwwstl.org

CAUSES TO CELEBRATE – SUMMER OF 2015

**H
E
A
L
T
H

C
A
R
E**

Of course, women won the right to vote 95 years ago! We’d like to believe that has made a difference. Policies evolving since that time lead us to other celebrations.

Medicare began 50 years ago! This primary health care coverage for persons reaching age 65 demonstrates a successful government, single-payer system. Improvements are being made year after year in the program, but we cannot imagine our society without such a benefit. Coverage is extended to other special categories for benefits.

Just 25 years ago, the **Americans with Disabilities Act** became a reality. Homes, workplaces and public spaces were to be designed with access and accommodations for those facing physical challenges. Progress had been made with future gains still to be determined and shaped through public policy.

Social Security and Medicare has the financial health to pay full benefits through Social Security’s retirement trust fund until 2035 while Medicare’s giant trust fund for inpatient care won’t be exhausted until 2030. *Washington Post Politics* gave this report based on the annual check-up for these funds.

DISABILITY PROGRAM ALERT: There will be automatic benefit cuts to those receiving Social Security Disability payments as the trust fund is expected to run out of money late next year. Trustees’ report disability benefits are at, “an ‘urgent threat’ of insolvency [which] requires prompt action by Congress.”



Eleven (11) million people could see a 19% automatic cut in the monthly payment amounts. An average family income from this source would drop from \$1,017.00 to \$847.00, with typical benefit reductions of \$193 a month. Congressional action will be required in the heat of election season to prevent this reduction.

We can still reflect on accomplishments. While the *Patient Protection and Affordable Care Act* is just at the beginning, oversight, modification and development will continue. Our nation’s health depends on continuing efforts to improve access to quality, affordable health care for every individual.

One example of one program enhancing another is implementing new screening rules for providers. According to Shantanu Agrawal, the director of Medicare’s Center for Program Integrity, “Fundamentally, the [2010 health law/ACA] created enrollment and screening and required a risk-based ... clearly a much more proactive stance” for review of medical providers receiving payment through Medicare services. The Centers for Medicare and Medicaid Services (CMS), which runs Medicare, has been revamping its enrollment system and verifying provider information, such as addresses and licensure.

The Government Accounting Office (GAO) reviewed 1.8 million medical providers who billed through Medicare (doctors, therapists, etc.) from February 2011 – March 2013. More than 34,000 providers have been eliminated from the program due to misinformation. More than 23,000 of those were found to have invalid addresses. Dozens of doctors were enrolled despite disciplinary actions by state medical boards. With the \$600 billion-a-year taxpayer-funded program, it is worth oversight. (Information based on an article in the *Wall Street Journal* – July 22, 2015)

Dianne Modrell, Health Care Committee Chair

League of Women Voters of Metro St. Louis Schedule of Events 2015-2016

2015

August 4	Elections City bond issue
August 22	Women’s Equality Day Event
August 26	Board Meeting
September 16	<i>Missouri Legislature Veto Session</i>
September 16	Kickoff, Wednesday 5:30pm Orlando’s on Dorsett
September 30	Board Meeting
October 10-17	<u>Unit Meeting</u> Money & Politics (City unit on the 10th)
October 22	St. Louis Housing Authority Election, 8:00 am -5:00 pm
October 24	Theatre Party Matinee, “Dog Fight”, Stray Dog Theatre
October 28	Board Meeting
November 7	LWVMO Statewide Conference, Sedalia
November 9-14	<u>Unit Meeting</u> <u>Upcoming Legislative Session</u> (education and health)
November 18	Board Meeting
November 30	Plowshares 10:00am to 7:00 pm
December 5 (No Dec units)	Holiday Luncheon
TBA	Winter Wonderland

2016

January 6	First Day of Legislature Session
January 9-14	<u>Units</u> <u>LWVUS Consensus Money & Politics</u>
January 12	Capitol Action Day, Jefferson City
January 18	Martin Luther King Day
January 27	Board Meeting
February	Begin work municipal election Voters Guide
February 10	Last day to register for March 8 Election
February 9-13	Units Program planning LWVUS
February 14	LWV Birthday
February 17	<u>Last day to register for</u> March 15 Presidential Preference Primary Election
February	Trivia Night
February 23	First Day to file for legislative office

Schedule of Events 2015-2016

2016

February 23	First Day to file for legislative office
February 24	Board Meeting
March	Women’s History Month
March	Candidate Forums
March 8	Primary Elections St. Louis City
March 9	Last day to register for April 5 Municipal Elections
March 8—12	Units Unit choice (City unit on the 12th)
March 15	Presidential Preference Primary Election
March 23	Board Meeting
April 5	Municipal Elections
April 9-14	Units Legislative Update / Roblee Update
April 16	Annual Meeting, Saturday
April 30	State wide Meeting, Columbia
June 16-19	LWVUS Convention
July	Begin work on Primary Voters Guide
July 6	Last day to register for August 2 Primary Election
August 2	Primary Elections
August	Begin work on General Election Voters Guide
September	Registration month
November 8, 2016	Elections

AUGUST 18TH LLYWELYN’S PUB 5:00-8:00PM

Join in the Celebration of the 95th Anniversary
of the Ratification of the 19th Amendment
Giving Women the Right to Vote!

CELEBRATE THE



Llywelyn’s is in Webster Groves, 17 W. Moody Ave.

Additional Parking available on N. Gore.

Appetizers ~ Entertainment ~ Cash Bar

Tickets \$15 before Aug. 9th,

General Admission \$20.00

For information and tickets:

<http://www.eventbrite.com/e/celebrate-the-vote-tickets-17735157333>

**M
E
M
B
E
R

N
E
W
S**

MEMBERSHIP UPDATE

New Members:

Angela Newsom
Westside Missionary Baptist Church
5731 Julian Ave.
St. Louis MO 63112-2919

Rebecca Now
9719 Twincrest Dr.
St. Louis MO 63126-1507

Beverly Rehfeld
8350 Delcrest Dr. #910
St. Louis MO 63124-2165

Rejoined:

Juli Niemann
7911 Stanford Ave.
St. Louis MO 63130-3613



Address Changes:

Mary Ellen Brucker
575 Couch Ave. #273
St. Louis MO 63122-5536

Jacqueline Phillips
693 Decker Ln. Apt. 422
St. Louis MO 63141-6720

Bertha Wallbrunn
10701 N. La Reserve Dr. Apt. 262
Tucson AZ 85737-9103

TRIBUTES & MEMORIALS

The LWV of Metro St. Louis received a contribution in memory of Don Phares from Linda McDaniel. We extend our sympathies to Kathy and the family.

We were saddened to learn of the death of one our members, M. Peter Fischer. Mr. Fischer was born into the League as a result of his mother’s leadership. As an adult Peter was a member and generous contributor to the League of Women Voters along with his wife, Suzanne. We extend our sympathies to Suzanne and the family.

VOLUNTEERS

The WEATHER is hot, hot, hot, and at the League office we are busy answering phone calls regarding the August 4th election. Our volunteer coordinator is always happy to add another name to our office volunteer list. If you have some free time contact Barbara Harris. Her email address is volunteers@lwwstl.org

Our volunteers since our last newsletter include: Liz Aurbach, Stephen Aylward, Stefany Brot, Lori Calcaterra, Esther Clark, Jim Clark, Becky Clausen, Marjorie Courtney, Mickey Croyle, Helen Davis, Joan Esserman, Kathleen Farrell, Agnes Garino, Eve Golden, Mickey Hall, Barbara Harris, Ginny Hartley, Jim Hartley, Debby Howard, Nancy Hutchins, Pat Jones, Kathleen Lottenbach, Linda McDaniel, Nancy Miller, Cindy Mitchell, Dianne Modrell, Gwen Moore, Carolyn Nolan, Carol Portman, Nancy Price, Mary Beth Reynolds, Sydell Shayer, Judith Smart, Jean Srenco, Catherine Stenger, Billie Teneau, Pam Todorovich, K Wentzien, Louise Wilkerson, and Sue Williams.

This list includes the St. Louis board members. When you attend a board meeting, please remember to sign the volunteer book in the office so we have a record of our volunteers’ hours. We appreciate your commitment to the League. If we neglected to list your name please let us know and we will thank you in the next newsletter.

Julie Behrens, Staff



From the Executive Director’s Desk

I am not sure why it took so long for this news to reach me. Maybe you haven’t heard it either. In March, the governor of Oregon signed into law a bill that automatically registers every eligible adult to vote when they obtain or renew a driver’s license. They are given the opportunity to opt out, but otherwise are then fully registered. Oregon also utilizes all-mail voting, and has enjoyed very high voter participation rates since starting the practice in 1998.



Sometimes, we get stuck in patterns of how things have always been and forget that those things can change. What would a change like this mean for Missouri? . . . for the United States? We have several times hosted international visitors who are surprised that we do not have universal automatic voter registration. This is common practice throughout the world. The League has a role to play in moving our state and country toward sending more informed voters to the polls. Be alert for opportunities to do so.

Anna Mennerick



IN LEAGUE REPORTER

NON PROFIT ORG.
U.S. POSTAGE
PAID
ST. LOUIS MO
PERMIT NO.1481

RETURN SERVICE REQUESTED

LEAGUE OF WOMEN VOTERS OF ST. LOUIS
8706 MANCHESTER ROAD, SUITE 104
SAINT LOUIS, MO 63144

AUGUST 2015 CALENDAR

Tues.	Aug 4th	6am-7pm	St. Louis City Bond Election, Municipal	City Voting Locations
Tues.	Aug 18th	5-8:00pm	Celebrate the Vote	Llywewlyn's, Webster
Fri-Sat	Aug 21-22nd		LWVUS Liason Meeting	League Office
Sat.	Aug 22nd	10-2:00pm	Equality Day Brunch	Crowne Plaza, Clayton
Wed.	Aug 26th	6:00pm	LWVMetroSTL Board Meeting	League Office

PLANNING AHEAD

Wed.	Sept 16th		Missouri Legislature Veto Session	Jefferson City
Wed.	Sept 16th	5:30pm	Fall Kickoff	Orlando's on Dorsett
Wed.	Sept 30th	6:00pm	Board Meeting	League Office
Wed.	Oct 7th		Last Day to Register for November Election	
Thurs.	Oct 22nd	8am-5pm	St Louis Housing Authority Elections	Various Housing Locations
Sat.	Oct 24th	Matinee	Annual Theatre Party	Stray Dog Theatre