



IN LEAGUE REPORTER THE LEAGUE OF WOMEN VOTERS OF ST LOUIS

8706 Manchester Road, Suite 104,
St Louis, MO 63144
314.961.6869 league@lwwstl.org
www.facebook.com/lwwstl www.lwwstl.org

JULY 2014

2014-2015 LWWSTL

BOARD of DIRECTORS

Co-Pres. Linda C McDaniel
Kathleen Farrell
1st V.P. Pat Jones
2nd V.P. Nancy Miller
3rd V.P. Unfilled
Sec'y Pat Soraghan
Treas. Becky Clausen

Directors

Rosalie Brasch
Micky Croyle
Eve Golden
Nancy Hutchins
Dianne Modrell
Sydell Shayer
Catherine Stenger
Louise Wilkerson

ILR Editor Nancy Miller

ST. LOUIS BOARD SETS PRIORITIES FOR 2014-15

The Board of Directors set its program priorities for the upcoming year at its June 29th retreat. You spoke last spring and we listened! Our priorities for member and public programs are:

- Voter Suppression
- Campaign Finance Reform
- Redistricting

We will be working with unit leaders over the next month to offer you a variety of programs for next year. We will be holding our traditional unit meetings as well as hosting one or two Lunch & Learn programs of public interest. These were very successful last year and we gained a number of new members from those who attended. There will be gatherings to discuss the upcoming ballot issues, preview the Missouri legislative session, and a statewide November 15th conference with our sister Leagues across Missouri.

We are getting our local study committee on the relationship between St. Louis City and St. Louis County launched. Please let us know if you are interested in working on this very important issue.

We will be having our annual Theatre Party in the fall and our second Trivia Night in the spring. These very successful events provide not only funds to support the work of both the League and the Information Service, but also are a great time to gather with old friends and make new ones. Watch for details in the next newsletter.

Voter Guide distribution will take place July 24-26th so be prepared to volunteer.

Enjoy the rest of your summer. Drop by and say hello. The office is buzzing with activity!

FEATURE ARTICLES

<i>Board Sets Priorities</i>	1
<i>Message from the Presidents</i>	2
<i>LWVUS Convention</i>	3-4
<i>IR Korean Lunch</i>	4
<i>Equality Day Brunch</i>	5
<i>2013-2014 Budget Reports</i>	6-7
<i>Legislation, Voters Forum</i>	8
<i>Virginia Minor Fund</i>	9
<i>eScrip & Yard Signs</i>	10
<i>Member News</i>	11
<i>Volunteer</i>	11
<i>Executive Director</i>	11
<i>Calendar for July</i>	12

LUNCH and LEARN on AUGUST BALLOT ISSUES

Tuesday, July 15 Noon - 1:30 pm

League Office R.S.V.P. 314.961.6869

BRING YOUR LUNCH AND BRING A GUEST!!

MESSAGE FROM THE PRESIDENTS JULY 2014

It's Summertime but League is Busy! It seemed like the April 8th 26 page Voters Guide had just been distributed to over 100 locations, when work on the August 5th primary began. Five statewide ballot issues wound their way out of the legislature and the Secretary of State's office to our researchers' desks. These are interesting issues: freedom to ranch or farm without "state infringement", a Veterans Lottery Ticket to fund veteran services, the protection of individuals' electronic communications and date from "unreasonable searches and seizures", protection of the right to bear arms, and the transportation sales tax. There are 324 candidates in the six counties and St. Louis County we are covering along with approximately 40 local ballot issues to add to the statewide propositions in the Guide. In addition, candidate forums are shaping up, we are launching the City/County study, developing materials for the Speakers' Bureau and working on next year's agenda. We hope to work in some vacation time for our volunteers before summer's end.

☆☆☆☆☆☆☆☆
☆☆
☆☆ "The future
☆☆ belongs to
☆☆ those who
☆☆ believe in
☆☆ the beauty
☆☆ of their
☆☆ dreams."
☆☆ Eleanor
☆☆ Roosevelt
☆☆☆☆☆☆☆☆

We were inspired by the work done by Leagues around the country when we were at the national convention. The New Jersey League was asked by the Secretary of State there to set up polling places in the wake of Hurricane Sandy, with the election occurring just one week after that terrible storm. Legal battles were waged by Florida, Texas, South Carolina, Wisconsin, Minnesota, Pennsylvania and others.

We shared our Missouri victories with our fellow Leaguers in Dallas. Voters' rights were protected once again this legislative session when the Photo Voter I.D. provision was dropped at the last minute from the Early Voting bill. It looks like there may be two Early Voting ballot propositions on the November 2014 ballot – one passed by the legislature that calls for a one week early voting period and one more comprehensive early voting proposal brought by citizen initiative. We are waiting for the Secretary of State's office to certify the signatures on the citizen petition. We will keep you posted on these important issues.

Encourage all eligible voters you know to go to the polls on August 5th.

Linda C. McDaniel Kathleen Farrell Co-Presidents

COMMITTEES
The International Relations Committee will meet Sept. 12, at 10 a.m. at the St. Louis Library Headquarters. All other committees will resume meeting in October.

UNIT MEETINGS
UNITS WILL RESUME MEETING IN OCTOBER. WATCH FOR INFORMATION IN THE SEPTEMBER ILR.

CONVENTION BUSINESS



630 Delegates from a total of 1540 members representing 47 states and the District of Columbia:

ADOPTED 3 BYLAW PROPOSALS

Allows more than one League to propose wording for a National Concurrence

Allows the National Board rather than convention to grant recognition of and determine requirements for new Leagues.

Eliminated the board office of 2nd Vice-President and split the office of Secretary/Treasurer into two separate offices

- Secretary and Treasurer

ADOPTED A PROGRAM FOR 2014-2016 (240 Leagues from 38 states participated in program proposals)

New – A 3 part study and review of key structures of American democracy

Study Process of amending the U.S. Constitution

Review and update Campaign Finance Position

Review the redistricting process for U.S. Congress to develop action steps

Old – Retained all current positions

CONCURRENCE- ADOPTED position on HUMAN TRAFFICKING: OPPOSING ALL FORMS.

RESOLUTIONS directing the national board to:

Support a price on carbon emissions

Quickly appoint committees to arrive at a national action program on the new 3 part study and review program

Advocate for legislation to restore voting rights in federal elections to felons who have completed their terms of incarceration or are on parole or probation. Provide support to state Leagues working on this issue.

ELECTED A NEW NATIONAL BOARD AS RECOMMENDED BY THE NOMINATING COMMITTEE

OFFICERS

Elisabeth MacNamara – President,

Toni Larson –Vice President,

Karen Nicholson – Secretary,

Patricia Donath – Treasurer

DIRECTORS

Peggy Appler, Chris Carson, Connie Ferguson, Anita Loch, Rosalee Keech, Anne Schink, Linda Wassenich,

Barbara Zia

NOMINATING COMMITTEE

Mary Fox Chairman, Alice Giles, Lee Luebbe

Deidre Macnab removed her name from running for director so that she could run for President. After an active campaign by both candidates, Elizabeth MacNamara was declared the winner.

ADOPTED A BUDGET FOR 2014-2016

PMP for 2014-2015 remains at \$31.00

PMP for 2015-2016 increased to \$32.00

The budget was amended to provide for a minority task force similar to the youth task force already in the budget. During direction to the board the name was change to diversity task force.

Becky Clausen and Catherine Stenger enjoy a meeting.

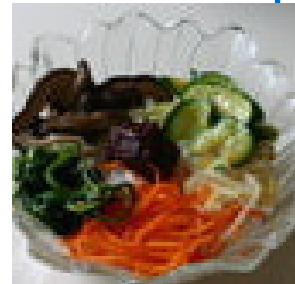


L
W
V
S
C
O
N
V
E
N
T
I
O
N

NEWS from the INTERNATIONAL RELATIONS COMMITTEE

The International Relations Committee (IR) may not be having study meetings this summer; however, we still like to meet to socialize. On **July 11 at 11:30 a.m.** we are planning to go out for a **Korean lunch** and all League members and friends are invited. The Asian Kitchen is the name of the restaurant; it's located at 8423 Olive Blvd in University City. Please RSVP to the League office, 314-961-6869, as we would like to give the Asian Kitchen an approximate number to expect. We look forward to seeing you then.

If you cannot join us for lunch but are considering joining the IR committee this coming year, please join us for our first meeting on September 12 at 10 a.m. at the St Louis County Library HQ. We have chosen the topic of comparing and contrasting electoral systems and practices of three or four countries in the developed world. We have not chosen the countries yet; therefore your input would be most welcome. Because this is a busy election year in the US this should be quite a relevant study.



Judith Smart, IR Chair

Convention 2014 was headquartered at the Omni Hotel in Dallas, Texas, from June 6th to June 10th. In addition to the business and the speakers, there were caucuses, training tracks and issue sessions. There were q and a meetings as well as an advocacy report and staff report and president's address and introductions of Shur Fellows and of course the wares market plus lots more training opportunities and some entertainment.



St Louis delegates were Kathleen Farrell, Linda McDaniel, Becky Clausen, Nancy Hutchins, Anna Mennerick, Debby Howard, and Catherine Stenger



LWVSTL also stayed busy selling various items at the Wares Market. Popular items were a League insulated drinking glass in 2 sizes, a nifty 5x7 spiral notebook with attached Ziploc, a case for various sizes of post-its, and a variety of logo items and posters. These items are now available at the League office and soon, online at the LWVSTL website: www.lwvstl.org



Kathleen and Anna assist customers at the Wares Market.



27th ANNUAL EQUALITY DAY BRUNCH

JOIN WOMEN ACTIVISTS ON THIS SPECIAL DAY!

*Celebrating the 93rd Anniversary of
Women Getting the Vote*

Presentations include:

Special Well-Known Speaker

- Election and Legislative Issues
 - Political Action
 - Awards -
 - Women's Equity

Saturday, August 23, 2014

10:00 am - 2:00 pm

(Registration begins at 9:30am)

Crowne Plaza Hotel Crystal Ballroom

Registration Form

Name _____

Address _____

City/State/ZIP _____

E-Mail _____

Phone _____

Sign up for

Brunch and Program \$37.00* _____

Students 15.00 _____

Educational Fund Donation _____

Scholarship Fund Donation _____

MWN Membership Dues _____

Organization \$30 _____

Individual \$20 _____

Total \$ _____

Make checks payable to **Missouri Women's Network**;
mail to Julia Triplett, 401 Oakmont Circle, Ballwin MO
63011. Call Shirley Breeze(314-831-5359) or Pat Shores
(636-938-3958) for additional information or late reser-
vations. Limited number of late reservations.

*Scholarships are available.

**LWV Information Service
Income & Expenses to Budget
July 1, 2013 - June 26, 2014**

**A
Z
C
F
A
B
C
D
G
H
M
R
P
V
W**

	Mar 24- June			
	20 Jul 1 to June 20	Annual Budget		% of Budget
Income				
4000 · Contributions members	1,075	6,395	5,000	128%
4010 · Contributions - non members	110	224	1,500	15%
4020 · First Vote		6,727		
4050 - Plowsharing crafts		144		
4051 - Trivia Silent Auction	(196)	325		
4100 · Contributions - foundations			5,000	0%
4200 · Contributions - corporations			5,000	0%
4300 · Tributes and bequests	-	160	500	32%
4700 · Voter education income	210	220		
5400 · LWVIS - theater party - net	-	9,862	6,000	164%
5410 · Winter wonderland	-	500	500	100%
5420 · Electronic script rebate	117	645	1,000	65%
5430 · Tour of the Hill		150	1,500	10%
5440 · Housing Election Monitoring	-	1,200	1,500	80%
5450 . Give STL	1,545	70		
5600 · Interest and dividends	580	5,173	2,500	207%
5610 · Sale of Stock	-	22,000	21,220	104%
Total Income	1,966	53,795	51,220	105%
Expense				
6000 · Salary and wages	7,438	22,292	22,280	100%
6999 - credit card fees	-	29		
7000 · Contract services - fundraising	1,500	2,750	2,500	110%
7010 · Contract service - voters		0	2,500	0%
7060 · Equipment lease	390	1,550	1,560	99%
7090 · Insurance	80	320	320	100%
7110 · IT support	120	552	480	115%
7120 · Software - voter service	-	1,800	2,000	90%
7150 · Office supplies	300	1,200	1,200	100%
7160 · Postage	139	933	1,050	89%
7170 · Printing	100	286	350	82%
7175 · Voter's Education Publications	36	374	3,000	12%
7180 · Rent	2,000	8,033	8,000	100%
7190 · Repair, maintenance, cap improv	100	400	400	100%
7203 National Convention/Council	1,300	1300		
7210 · Telephone/internet	270	1,080	1,080	100%
7310 · National PMP	-	3,930	4,500	87%
Total Expense	15,049	46,829	51,220	91%
Income less expenses	-13,083	6,966	0	
Net Income		6,966	0	
Investments				
		7/1/2013	6/26/2014	
West Community Credit Union		9,155	7,562	
Vanguard funds		310,411	355,329	
		319,566	362,891	

**League of Women Voters of St Louis
Income and Expenses to Budget
July 1, 2013 - June 26, 2014**

	Mar 24- June 20	Jul 1- June 20	Annual Budget	% of bud
Income				
4000 · Contributions members	4,050	5,522	6,500	85%
4010 · Contributions - non members		150	2,000	8%
4050 · Dues	11,001	14,411	21,000	69%
4200 - Contributions - unions	1,000	1,000		
4300 · Tributes and Bequests	30	320	5,000	6%
4700 · Voters services contributions	-	20	750	3%
5400 · Trivia Party	216	3,961	4,650	85%
5420 · Tailgate & book Sale - net	-	868	500	174%
5440 · Product Sale including purses	5	387	400	97%
5445 Logo Product	(327)	(327)		
5450 · Kickoff meeting - net	-	514	0	0%
5460 · Holiday meeting - net	-	251	0	
5465 - Silent auction @ holiday auction	-	175		
5470 · Annual meeting - net	(102)	-102	0	
5600 · Interest & Dividends	-	0	50	0%
5910 · Miscellaneous revenue	-	0	300	0%
Total Income	13,759	25,037	41,150	61%
Expense				
6000 · Salary, wages, benefits	3,481	12,765	14,226	90%
7050 · Dues & coalitions	(30)	50	200	25%
7060 · Equipment lease	238	969	975	99%
7090 · Insurance	50	200	200	100%
7110 · IT support	75	538	300	190%
7140 · Paypal and Sq fees	15	34	350	10%
7150 · Office supplies	432	994	1,500	66%
7160 · Postage	333	1,150	1,200	96%
7170 · Publications/position support	216	569	1,220	47%
7180 · Rent	1,271	5,021	5,000	100%
7190 · Repair, maintenance, cap improv	62	250	625	40%
7210 · Telephone/internet	169	675	675	100%
7250 · Recruitment/membership	30	257	1,250	21%
7300 · Travel and Meetings Expense	3,523	3,523	4,229	83%
7310 · National PMP	3,984	3,984	5,200	77%
7320 · State pledge	1,855	3,855	4,000	96%
Total Expenses	16,710	35,865	41,150	79%
Income less Expenses	(1,312)	(9,190)		

	07/01/2013	06/20/2014	LWVMO PMP \$15/yr
West Community Credit Union	19,226	11,355	LWVUS PMP \$31/yr
Oppeheimer money market	246	393	(1/2 LWV, 1/2 LWVIS)
Oppenheimer mutual fund	6,186	6,996	
	25,658	18,744	

MORE HEALTH CARE REFORM AHEAD

The Missouri Legislature did not pass Medicaid Expansion. Efforts will continue. A few transforming elements were made to the Medicaid system that will include more dental and mental health coverage. If Missouri expanded Medicaid, 250,000 - 300,000 Missourians would have more comprehensive services.

It is important to thank those who have helped Medicaid Expansion continue moving forward. That includes not only advocates, but also the legislators willing to keep the action going.

The good news for Missourians has been enrollment through the Insurance Marketplace. The goal set by Health and Human Services for our state was met at 129%. The total number of Missouri enrollees was 152,335 in the first open enrollment period, in spite of a challenging start with technical issues.

There will be another open enrollment period in the fall. Certain exceptions for enrollment are made in the interim. Any follow-up, lingering questions and application corrections can be addressed through Legal Aid of Eastern Missouri (low-income assistance), Navigators and Certified Application Counselors (CACs).

The Cover Missouri Coalition has set a goal of reducing the uninsured population to 5% in 5 years. This would be accomplished with a combined enrollment through the Insurance Marketplace and a hopeful Medicaid Expansion.

ST. LOUIS COUNTY EXECUTIVE CANDIDATE FORUM

The League of Women Voters is moderating a Candidate Forum for candidates running for St. Louis County Executive on Wednesday, July 16, 7:00 pm at Florissant Valley Community College Student Center, 3400 Pershall Rd., 63135. Co-sponsors are the Greater North County Chamber of Commerce and Florissant Valley Community College.

The County Executive race is heating up, and we are expecting a good turnout. Please plan on attending! For those who have volunteered, thank you so much.

Pat Jones, LWV Candidate Forums

HELP A CHILD TODAY, FOR TOMORROW

We know LWV members are busy, but can you spare an hour a week to help a child read? OasisTutors don't need special teaching techniques...training is a requirement and generally occurs in September. Tutors can choose the school they choose to tutor in and usually which grade...from K through 3 (some schools go to 4th). OASIS Intergenerational Tutoring pairs volunteers with children in grades K-3 to work one-on-one each week as their tutors, mentors and friends. Celebrate the 25th anniversary of OASIS Tutoring! You can help us reach our goal of 2500 tutors by signing up now.



For more information, check out the Oasis website at www.2500tutors.org or oasisnet.org.

Organizers of the effort to honor Virginia Minor are thrilled over the response from the women in Missouri. Joyce Schuetz stated, "Women are still concerned about equity and they are showing that here." Of the \$10,000. needed to pay for the bust, over \$9,000 has been contributed thus far. Ms Scheutz said that contributions range from \$10. to \$1,000, and she is confident the goal will be reached. Any contributions beyond those required will be set aside to honor another Missouri Woman of accomplishment.

All contributors are invited to the unveiling of the bust at the Missouri Statehouse in September.

1,000 STRONG

\$10 X 1,000 = \$10,000

Stand with 1,000 Missourians for equal rights.

Help put Virginia Minor's bust in the Hall of Famous Missourians*



Virginia Minor led the fight for women's suffrage in Missouri. In 1872, she led hundreds of women in an effort to get women the right to vote under the 14th Amendment. With her husband as her lawyer she sued. But the Supreme Court in *Minor v. Happersett* decided that women were not covered by the 14th Amendment's guarantee of equal citizenship for all Americans. Not until 1971, nearly 100 years later, did the Court finally apply the 14th Amendment to women. After losing the case, she studied law and continued her work for women's suffrage until her death in 1894.

Be 1 of 1,000

Send your \$10 to the Missouri Women's Network Education Fund

*Busts are on permanent display in the Missouri capitol. They are privately funded.

More information: sbreeze@mindspring.com or mmosley@tranquility.net

Contributions are **tax deductible**. Make checks payable to Missouri Women's Network Education Fund and mail to Joyce Schuetz, 528 Oak Ridge Trails Ct., Ballwin, MO 63021

Name _____

Address _____

City, State, ZIP _____

Phone/ e-mail _____

No Cost Fundraising Opportunity

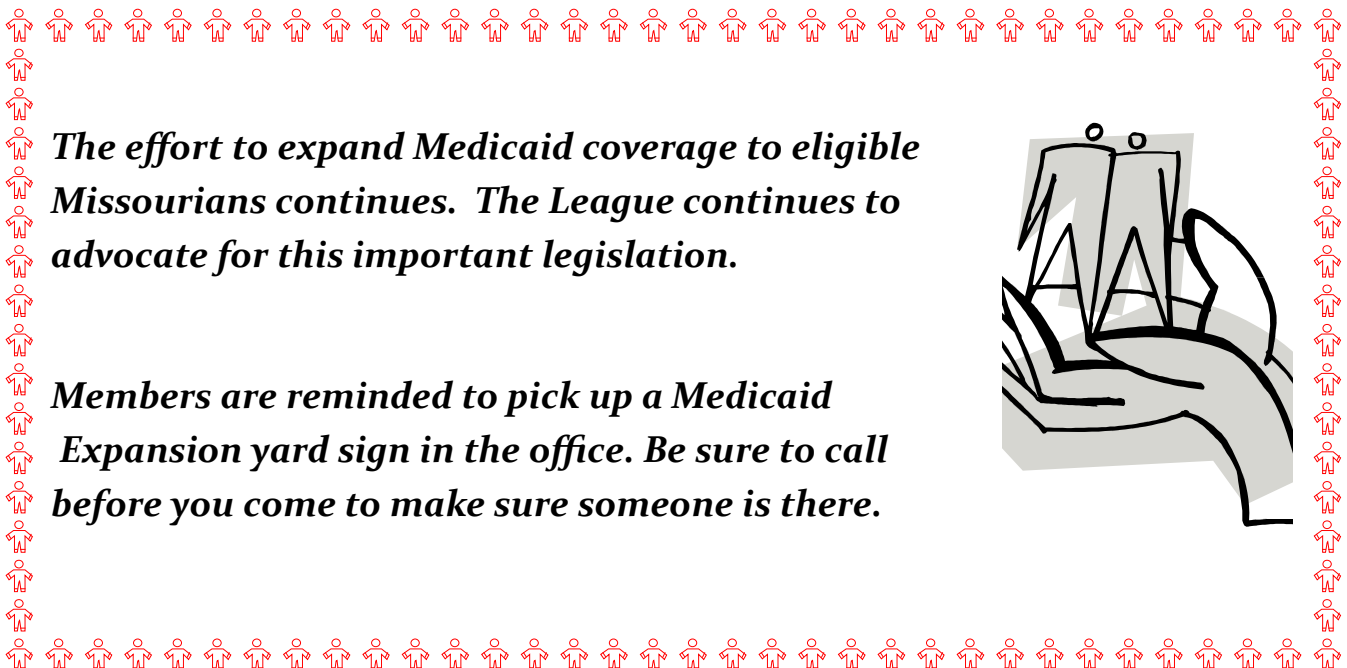
Attention *Schnucks* Shoppers

Schnucks will donate up to 3% for each purchase over \$25 to the League's Information Service. (LWVIS)

It's as easy as 1 2 3

1. Pick up a *Schnucks* eScrip card at the customer service counter.
2. Activate the card by calling 800-931-6258. Say your charity is the LWVIS, Group # 500015391 or go to www.escrip.com/schnucks.jsp and follow instructions.
3. Present your card to the cashier for scanning every time you shop at *Schnucks*.

The League benefits and it costs you nothing.



The effort to expand Medicaid coverage to eligible Missourians continues. The League continues to advocate for this important legislation.

Members are reminded to pick up a Medicaid Expansion yard sign in the office. Be sure to call before you come to make sure someone is there.



**M
E
M
B
E
R

N
E
W
S**

New Members:
 Cecilia Dunstan
 1130 Silo Bend Dr.
 Wentzville MO 63385-4347


Nora Fluent
 636-A Candleberry Ct.
 St. Louis MO 63122-5955

Margo Gordon
 555 Couch Ave. Apt. 208
 St. Louis MO 63122-5538

Patricia Piety
 3274 January Ave. Apt. 1
 St. Louis MO 63139-1740

Nancy L. Price
 P. O. Box 31402
 St. Louis MO 63131-0402

Rejoined:
 Judith Arnold
 4239 Enright Avenue
 St. Louis MO 63108-3023



TRIBUTES & MEMORIALS


We received a contribution in memory of **Mary Parker** from Linda McDaniel to LWV St. Louis. Mary was an active League member for many years at the local level. She joined the League of Women Voters in St. Louis in 1993. She contributed to any discussion and was a joy to know. She will be missed. We extend our sympathy to her family and friends.

We received a contribution in memory of **Sheila Lumpe** from Nancy Bowser to LWV St. Louis. Sheila was a League member in Indiana in 1962 and continued to be a member after moving to St. Louis in 1966. She was elected to the University City School Board, served in the Missouri House of Representatives for 17 years, and then was named to the Missouri Public Service Commission in 1997. She will be missed. We extend our sympathy to her family and friends

VOLUNTEER CORNER

Things are really heating up in the office. And we don't mean "The Weather". Our volunteers are busy working on the Voters Guide for the August 2014 primary election; in addition to the usual mailings for the St. Louis League, the Missouri League and the Metro News for the League of Women Voters Information Service, and Voter Registration. Those busy worker bees include Liz Aurbach, Stephen Aylward, Brenda Banjak, Rosalie Brasch, Stefany Brot, Evelyn Buretta, Lori Calcaterra, Esther Clark, Jim Clark, Becky Clausen, Marjorie Courtney, Mickey Croyle, Angie Dunlap, Betsy Enslin, Joan Esserman, Kathleen Farrell, Agnes Garino, Betty Ann Gilbert, Mickey Hall, Barbara Harris, Ginny Hartley, Ilene Horenstein, Debby Howard, Nancy Hutchins, Pat Jones, Kathleen Lottenbach, Linda McDaniel, Nancy Miller, Dianne Modrell, Cindy Mitchell, Gwen Moore, Carolyn Nolan, Marty Ott, Carol Portman, Mary Beth Reynolds, Sydell Shayer, Judith Smart, Pat Soraghan, Jean Srenco, Catherine Stenger, Billie Teneau, K Wentzien, Louise Wilkerson, and Sue Williams. This list includes the St. Louis board members. When you attend a board meeting, please remember to sign the volunteer book in the office so we have a record of our volunteers' hours. We appreciate your commitment to the League.

If you have time to donate to the League please contact our volunteer coordinator, Barbara Harris at 314.968.3609 or email Barbara at MBJH@charter.net
 Julie Behrens, Staff




From the Executive Director's Desk - Anna Mennerick

I really enjoyed my first LWWUS convention in Dallas last month. I experienced a caucus process that produced a successful resolution to encourage the restoration of voting rights for ex-felons. I was able to meet with other Executive Directors and picked up some useful ideas. We committed to be in touch monthly and continue sharing information that can benefit all our Leagues.

I was proud to be a part of the Missouri Delegation and felt honored to represent all of your dedicated work as we met to do the work of the LWWUS and share stories, enthusiasm, and ideas with our fabulous compatriots.



IN LEAGUE REPORTER

LEAGUE OF WOMEN VOTERS OF ST. LOUIS
 8706 MANCHESTER ROAD, SUITE :04
 SAINT LOUIS, MO 63144

NON PROFIT ORG.
 U.S. POSTAGE
 PAID
 ST. LOUIS MO
 PERMIT NO.1481

RETURN SERVICE REQUESTED

JULY 2014 CALENDAR

Fri.	July 4		Independence Day	Office closed
Fri.	July 11	11:30 am	Korean Lunch - IR	Asian Kitchen
Tues.	July 15	12-1:30 pm	Lunch & Learn on Ballot Issues	League Office <i>RSVP</i>
Wed.	July 16	7:00 pm	STL County Exec Forum	Florissant Valley CC
Wed.	July 23	6:00 pm	LWVSTL Board Meeting	League Office
Wed-Fri	July 23-25		VOTERS GUIDE DISTRIBUTION	

PLANNING AHEAD

Tues.	Aug. 5	6am-7pm	ELECTION DAY	Polling Locations
Sat.	Aug. 23	10am-2pm	Equality Day Brunch	Crowne Plaza Hotel
Wed.	Aug. 27	6:00 pm	LWVSTL Board Meeting	League Office
Mon.	Sept. 1		LABOR DAY	Office closed
Wed.	Sept. 10	TBA	Unveiling Virginia Miner Bust	Missouri Statehouse
Fri.	Sept. 12	10 a.m.	International Relations	STL County Library Hdqtrrs
Wed.	Sept. 17	5:30-7:30 pm	Kickoff Banquet	TBA
Tues.	Sept. 23		National Voter Registration Day	
Wed.	Sept. 24	6:00 pm	LWVSTL Board Meeting	League Office